

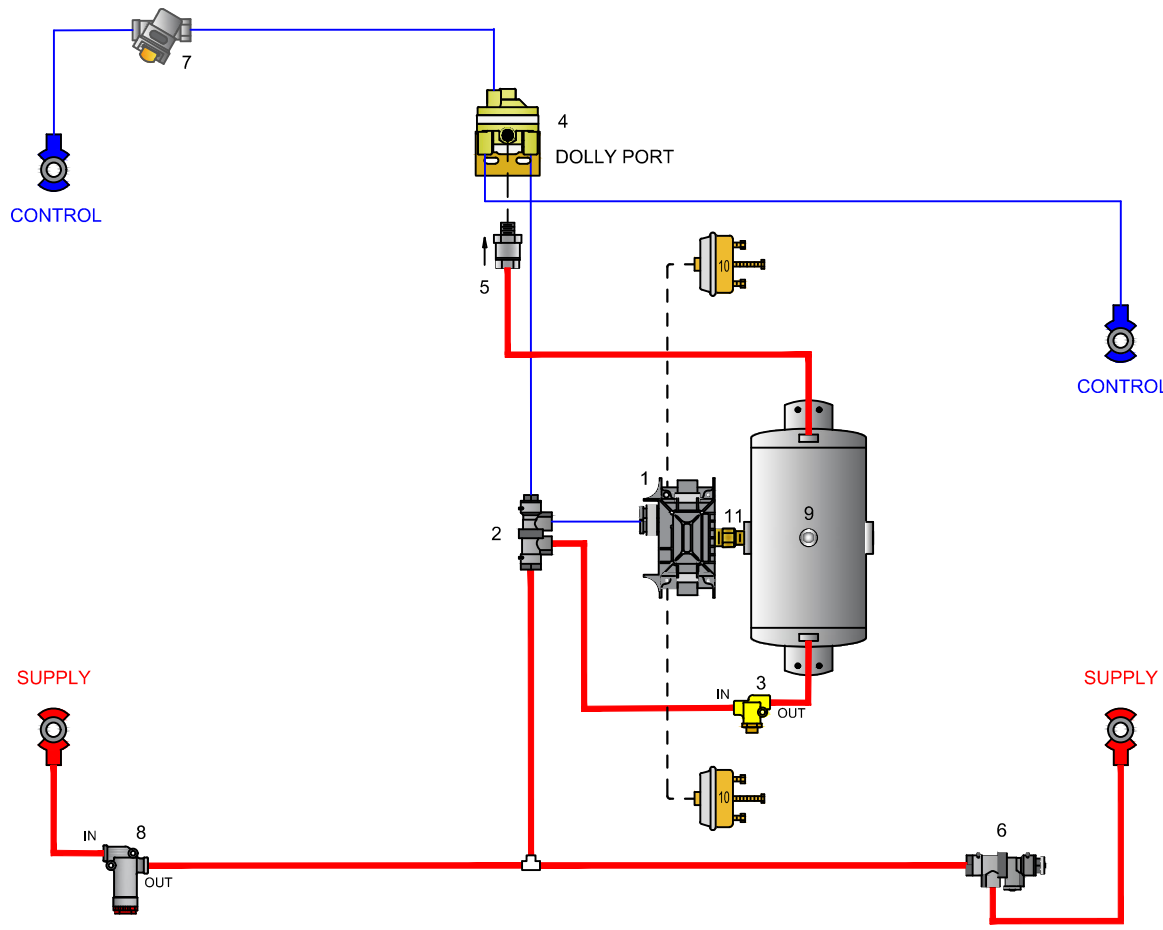


Sealco Commercial Vehicle Products

602-253-1007 fax 800/222-2334 www.sealcocvp.com

CONTROL LINE TUBE	SERVICE BRAKE HOSE	OTHER
SUPPLY LINE TUBE	SPRING BRAKE HOSE	OTHER
SUPPLY LINE TUBE 1/2" & CONTROL LINE TUBE IS 3/8" UNLESS OTHERWISE NOTED		

NO.	DESCRIPTION	NO.	DESCRIPTION
1	MERITOR WABCO 400 500 104 0 ECU ASSEMBLY & RELAY VALVE	7	MERITOR WABCO 432 500 005 0 CONTROL LINE FILTER
2	SEALCO NO. 110376 EMERGENCY CONTROL VALVE	8	SEALCO NO. 2550 LINE FILTER
3	SEALCO NO. 110257 EMERGENCY BRAKE PRESSURE PROTECTION	9	RESERVOIR - VOLUME TO BE AS PER FMVSS 121
4	SEALCO NO. 110570 DOLLY CONTROL LINE VALVE	10	SERVICE BRAKE CHAMBER
5	SEALCO NO. 10200-1/2 ONE - WAY CHECK VALVE	11	616 1/2" X 3/4" NIPPLE OR 6006 3/4" X 3/4" NIPPLE
6	SEALCO NO. 110474 ANTI BACK CHARGE VALVE		



2S/1M ECU ASSY & RELAY VALVE

WABCO NO. 400 500 104 0

- SUPPLY/RES PORT (2) - 3/4 N.P.T.
- DELIVERY PORT (4) - 3/8 N.P.T.
- CONTROL PORT (1) - 3/8 N.P.T.

EMERGENCY CONTROL VALVE

SEALCO NO. 110376

- CONTROL PORT (1) - 3/8 N.P.T.
- SUPPLY PORT (1) - 3/8 N.P.T.
- RESERVOIR PORT (1) - 3/8 N.P.T.
- DELIVERY PORT (1) - 3/8 N.P.T.

DOLLY CONTROL LINE VALVE

SEALCO NO. 110570

- CONTROL PORT (1) - 3/8 N.P.T.
- RESERVOIR PORT (1) - 1/2 N.P.T.
- DELIVERY PORT (1) - 3/8 N.P.T.
- DOLLY PORT (1) - 3/8 N.P.T.

ANTI BACK CHARGE VALVE

SEALCO NO. 110474

- SUPPLY PORT IN (1) - 3/8 N.P.T.
- SUPPLY PORT OUT (1) - 3/8 N.P.T.
- EXHAUST PORT (1) - 3/8 N.P.T.

VEHICLE COMPLIANCE & CERTIFICATION WITH ALL APPLICABLE FEDERAL, STATE & PROVINCIAL REGULATIONS INCLUDING FMVSS 121 & CMVSS 121 IS SOLELY THE RESPONSIBILITY OF THE VEHICLE MANUFACTURER

AIR SYSTEM REQUESTED BY:

SINGLE AXLE 2S/1M DOLLY			
DRAWN BY: MG	CHECKED: ZY	DATE: 3-8-2023	DRAWING NO: P-8083