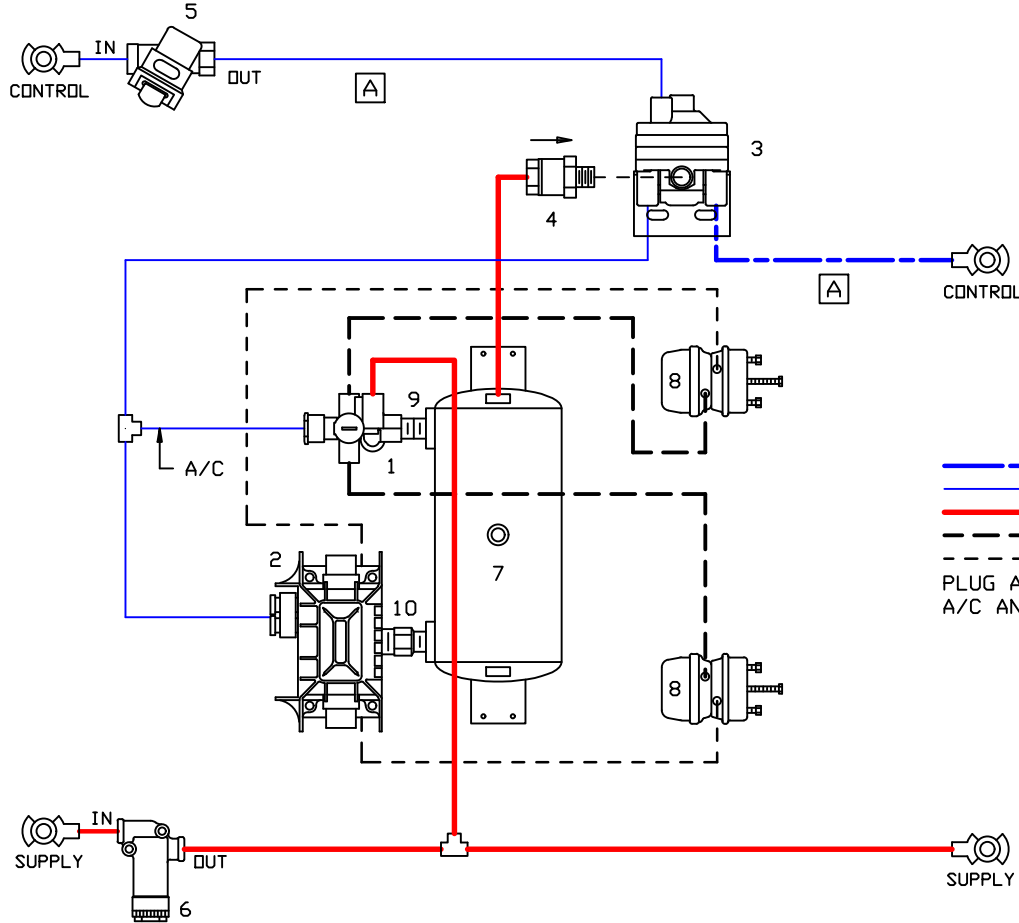


SEALCO Sealco Commercial Vehicle Products, Inc. Phoenix, Arizona

**NOTE:**

- [A] RECOMMENDED CONTROL LINE SIZE FOR ALL TRAILERS:  
 3/8" O. D. TUBE FROM NOSE OF TRAILER TO CONTROL  
 LINE VALVE, 1/2" O. D. TUBE FROM CONTROL LINE  
 VALVE TO REAR TRAILER GLADHAND.



--- CONTROL LINE (BLUE-1/2")  
--- CONTROL LINE (BLUE-3/8")  
--- SUPPLY LINE (RED-1/2")  
--- SPRING BRAKE  
--- SERVICE BRAKE  
 PLUG ALL UNUSED PORTS  
 A/C ANTI COMPOUNDING

NO.	DESCRIPTION
1.	SEALCO NO. 110800 SPRING BRAKE CONTROL VALVE
2.	ZF WABCO NO. 400 500 101 0 ECU & RELAY VALVE
3.	SEALCO NO. 110580 CONTROL LINE VALVE
4.	SEALCO NO. 10200-1/2 ONE-WAY CHECK VALVE
5.	ZF WABCO NO. 432 500 005 0 CONTROL LINE FILTER
6.	SEALCO NO. 2550 LINE FILTER
7.	RESERVOIR - VOLUME TO BE AS PER FMVSS 121
8.	SPRING BRAKE & SERVICE BRAKE CHAMBER
9.	SEALCO NO. 616 1/2" X 3/4" DR 6002 1/2" X 1/2" NIPPLE
10.	SEALCO NO. 616 1/2" X 3/4" DR 6006 3/4" X 3/4" NIPPLE

**SPRING BRAKE CONTROL VALVE**

SEALCO NO. 110800

1. CONTROL PORT (1)-3/8 N. P. T.
2. SUPPLY PORT (1)-3/8 N. P. T.
3. RESERVOIR PORT (1)-1/2 N. P. T.
4. DELIVERY PORT (4)-3/8 N. P. T.

**2S/1M ECU ASSY & RELAY VALVE**

ZF WABCO NO.  
400 500 101 0

1. SUPPLY/RES PORT (2)-3/4 N. P. T.
2. DELIVERY PORT (4)-3/8 N. P. T.
4. CONTROL PORT (1)-3/8 N. P. T.

**CONTROL LINE VALVE**

SEALCO NO.  
110580

1. CONTROL PORT (1)-3/8 N. P. T.
2. RESERVOIR PORT (1)-1/2 N. P. T.
3. DELIVERY PORT (2)-3/8 N. P. T.

VEHICLE COMPLIANCE & CERTIFICATION WITH ALL APPLICABLE FEDERAL, STATE, & PROVINCIAL REGULATIONS INCLUDING FMVSS 121 & CMVSS IS SOLELY THE RESPONSIBILITY OF THE VEHICLE MANUFACTURER

AIR SYSTEM DIAGRAM REQUESTED BY:

**SINGLE AXLE TRAILER  
DOUBLE**

DR: MG	CH: ZY	DATE: 2-15-2023	DRAWING NO: P-8081
-----------	-----------	--------------------	-----------------------