

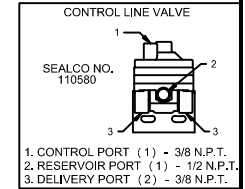
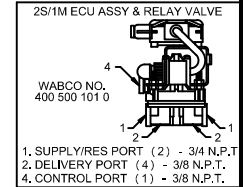
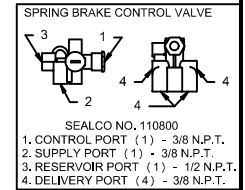
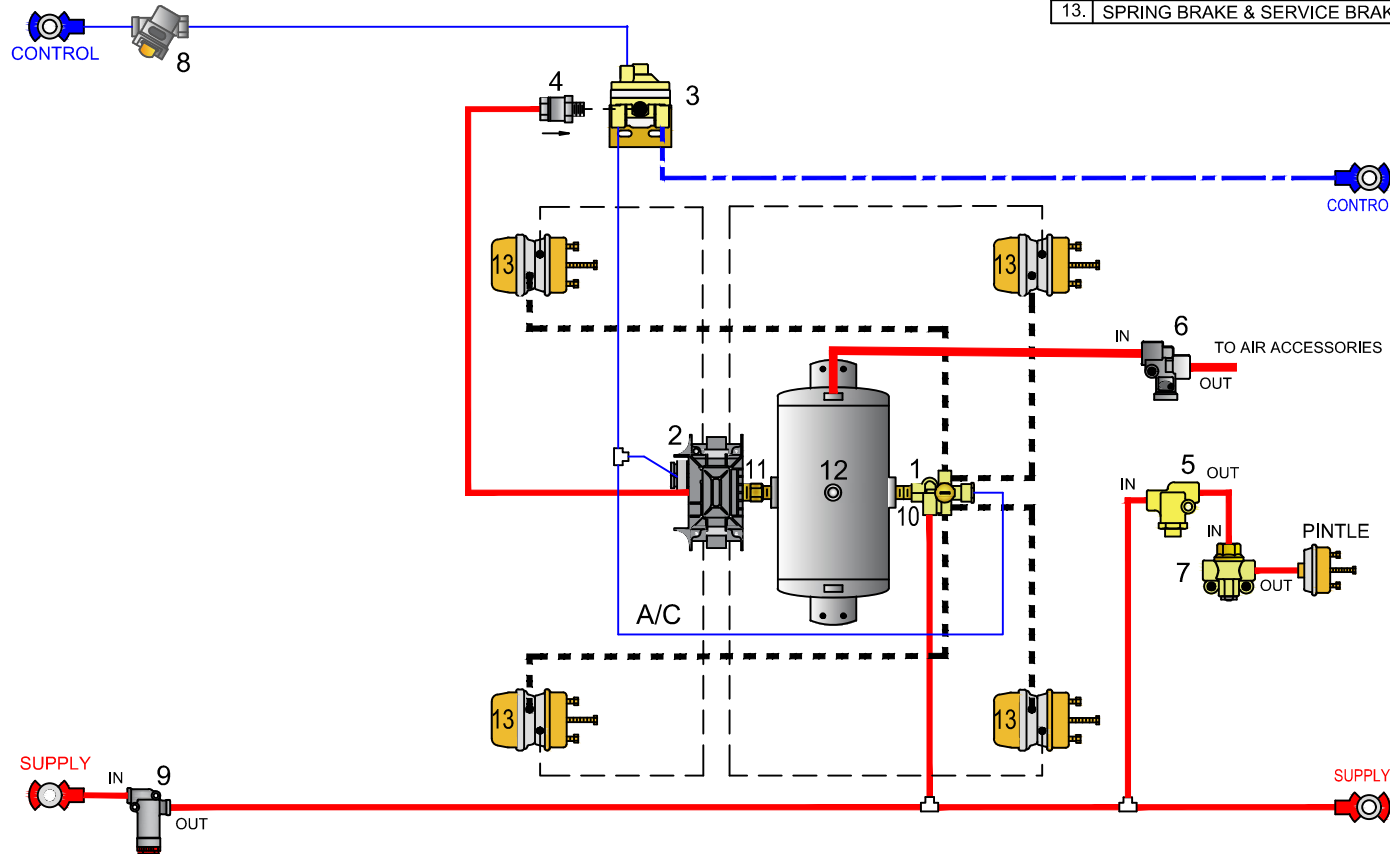


# Sealco Commercial Vehicle Products

602-253-1007 fax 800/222-2334 www.sealcocvp.com

- CONTROL LINE (BLUE-3/8")
  - - - CONTROL LINE (BLUE-1/2")
  - SUPPLY LINE (RED-1/2")
  - SPRING BRAKE
  - SERVICE BRAKE
- A/C ANTI COMPOUNDING  
PLUG ALL UNUSED PORTS

NO.	DESCRIPTION
1.	SEALCO NO. 110800 SPRING BRAKE CONTROL VALVE
2.	MERITOR WABCO NO. 400 500 101 0 ECU ASSEMBLY & RELAY VALVE
3.	SEALCO NO. 110580 CONTROL LINE VALVE
4.	SEALCO NO. 10200-1/2 ONE WAY CHECK VALVE
5.	SEALCO NO. 110257 EMERGENCY BRAKE PRESSURE PROTECTION
6.	SEALCO NO. 140270 PRESSURE PROTECTION VALVE
7.	SEALCO NO. 780524 RATIO EXHAUST VALVE WITH SEAL
8.	MERITOR WABCO NO. 432 500 005 0 CONTROL LINE FILTER
9.	SEALCO NO. 2550 LINE FILTER
10.	SEALCO NO. 616 1/2" X 3/4" NIPPLE OR 6002 1/2" X 3/4" NIPPLE
11.	SEALCO NO. 616 1/2" X 3/4" NIPPLE OR 6006 3/4" X 3/4" NIPPLE
12.	RESERVOIR - VOLUME TO BE AS PER FMVSS 121
13.	SPRING BRAKE & SERVICE BRAKE CHAMBER



VEHICLE COMPLIANCE & CERTIFICATION WITH ALL APPLICABLE FEDERAL, STATE & PROVINCIAL REGULATIONS INCLUDING FMVSS 121 & CMVSS 121 IS SOLELY THE RESPONSIBILITY OF THE VEHICLE MANUFACTURER

AIR SYSTEM REQUESTED BY:

TANDEM AXLE TRAILER DOUBLE

DRAWN BY: MG	CHECKED: ZY	DATE: 12-7-2021	DRAWING NO: P-7962
-----------------	----------------	--------------------	-----------------------