

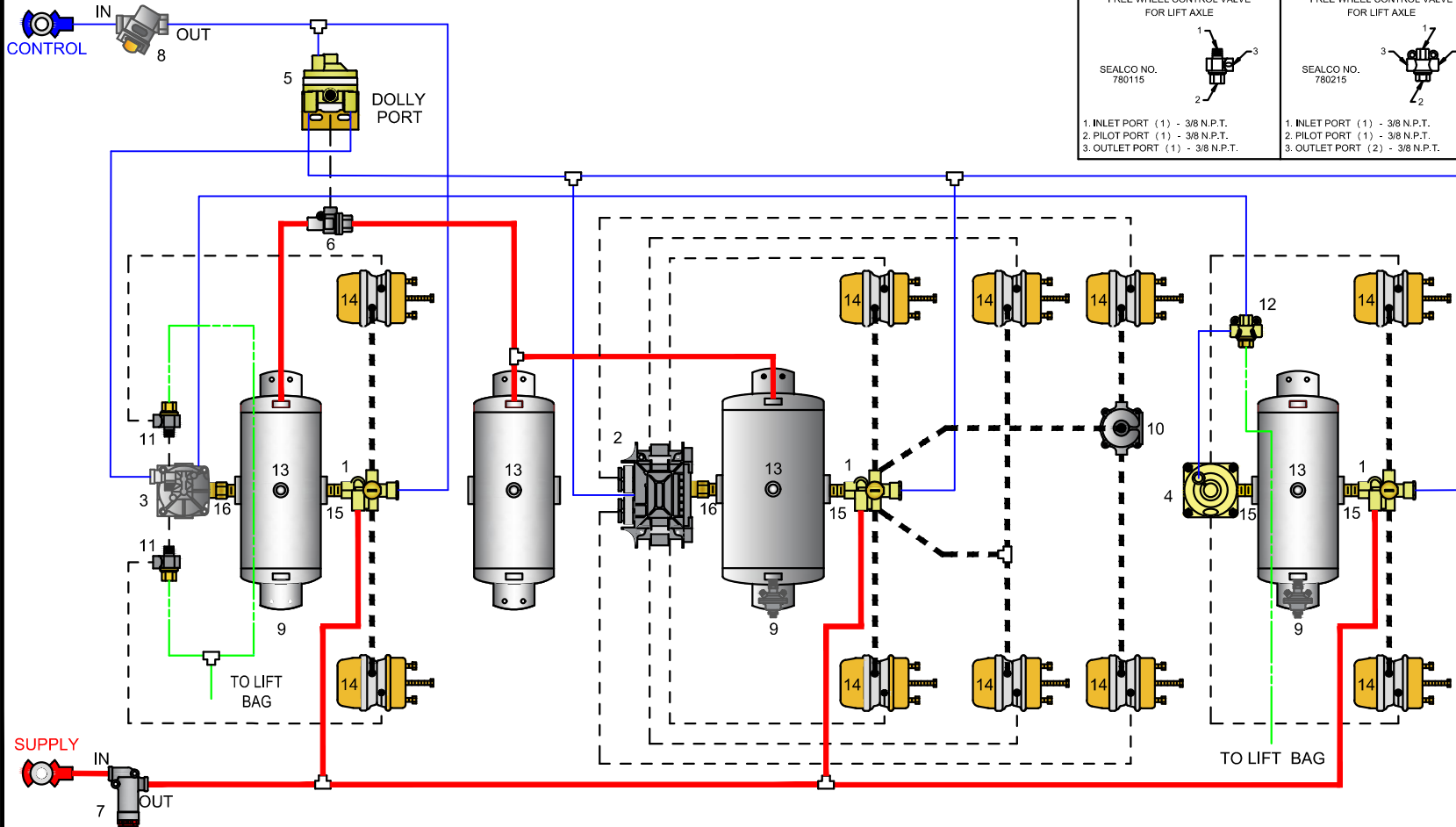


Sealco Commercial Vehicle Products

602-253-1007 fax 800/222-2334 www.sealcocvp.com

- CONTROL LINE (BLUE-3/8")
- SUPPLY LINE (RED-1/2")
- SPRING BRAKE
- SERVICE BRAKE
- - - PILOT FROM LIFT BAG

NO.	DESCRIPTION	NO.	DESCRIPTION
1	SEALCO NO. 110800 SPRING BRAKE CONTROL VALVE	9	SEALCO NO. 8000 LOW PRESSURE INDICATOR SWITCH
2	MERITOR WABCO NO.400 500 103 0 ECU VALVE ASSEMBLY	10	SEALCO NO. 200001 QUICK RELEASE VALVE
3	MERITOR WABCO NO.472 195 033 0 ABS RELAY VALVE	11	SEALCO NO. 780115 FREE WHEEL CONTROL VALVE FOR LIFT AXLE
4	SEALCO NO. 110360 RELAY VALVE	12	SEALCO NO. 780215 FREE WHEEL CONTROL VALVE FOR LIFT AXLE
5	SEALCO NO. 110570 CONTROL LINE VALVE	13	RESERVOIR - VOLUME TO BE AS PER FMVSS 121
6	SEALCO NO. 320100 TWO WAY CHECK VALVE	14	SPRING BRAKE & SERVICE BRAKE CHAMBER
7	SEALCO NO. 2550 LINE FILTER	15	616 1/2" X 3/4" NIPPLE OR 6002 1/2" X 1/2" NIPPLE
8	MERITOR WABCO NO.432 500 005 0 CONTROL LINE FILTER	16	616 1/2" X 3/4" NIPPLE OR 6006 3/4" X 3/4" NIPPLE



FREE WHEEL CONTROL VALVE FOR LIFT AXLE

SEALCO NO. 780115

- INLET PORT (1) - 3/8 N.P.T.
- PILOT PORT (1) - 3/8 N.P.T.
- OUTLET PORT (1) - 3/8 N.P.T.

FREE WHEEL CONTROL VALVE FOR LIFT AXLE

SEALCO NO. 780215

- INLET PORT (1) - 3/8 N.P.T.
- PILOT PORT (1) - 3/8 N.P.T.
- OUTLET PORT (2) - 3/8 N.P.T.

SPRING BRAKE CONTROL VALVE

SEALCO NO. 110800

- CONTROL PORT (1) - 3/8 N.P.T.
- SUPPLY PORT (1) - 3/8 N.P.T.
- RESERVOIR PORT (1) - 1/2 N.P.T.
- DELIVERY PORT (4) - 3/8 N.P.T.

PREMIUM ECU & DOUBLE MODULATOR ASSEMBLY AS 4S/3M

MERITOR WABCO NO. 400 500 103 0

- SUPPLY/RES PORT (2) - 3/4 N.P.T.
- DELIVERY PORT (6) - 3/8 N.P.T.
- CONTROL PORT (1) - 1/4 N.P.T.

ABS RELAY VALVE - 4 PORT

YE2 & BU2 SENSORS

SERVICE BRAKE RELAY VALVE

SEALCO NO. 110360

- CONTROL PORT (1) - 3/8 N.P.T.
- RESERVOIR PORT (1) - 1/2 N.P.T.
- DELIVERY PORT (2) - 3/8 N.P.T.

CONTROL LINE VALVE

SEALCO NO. 110570

- CONTROL PORT (1) - 3/8 N.P.T.
- RESERVOIR PORT (1) - 1/2 N.P.T.
- DELIVERY PORT (1) - 3/8 N.P.T.
- DOLLY PORT (1) - 3/8 N.P.T.

VEHICLE COMPLIANCE & CERTIFICATION WITH ALL APPLICABLE FEDERAL, STATE & PROVINCIAL REGULATIONS INCLUDING FMVSS 121 & CMVSS 121 IS SOLELY THE RESPONSIBILITY OF THE VEHICLE MANUFACTURER

AIR SYSTEM REQUESTED BY:

SPIF 4S/3M ABS 5 AXLE (1+3+1) SEMI TRAILER			
DRAWN BY: MG	CHECKED: ZY	DATE: 5-3-2021	DRAWING NO: P-7939