

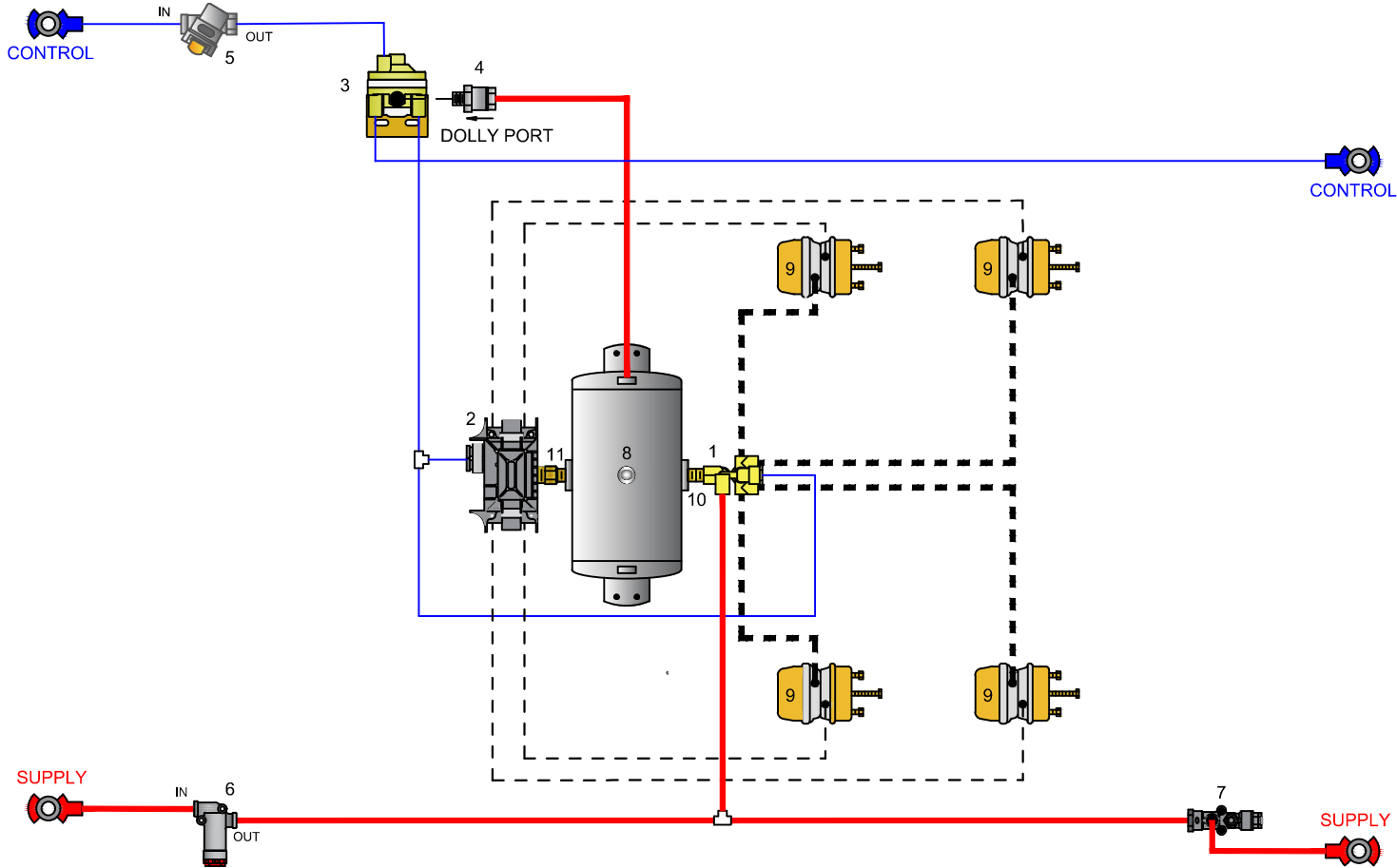


# Sealco Commercial Vehicle Products

602-253-1007 fax 800/222-2334 www.sealcocvp.com

CONTROL LINE TUBE	SERVICE BRAKE HOSE	OTHER
SUPPLY LINE TUBE	SPRING BRAKE HOSE	OTHER
SUPPLY LINE TUBE 1/2" & CONTROL LINE TUBE IS 3/8" UNLESS OTHERWISE NOTED		

NO.	DESCRIPTION	NO.	DESCRIPTION
1	SEALCO NO. 110500 SPRING BRAKE CONTROL VALVE	7	SEALCO NO. 110474 ANTI BACK CHARGE VALVE
2	MERITOR WABCO NO. 400 500 104 0 ECU ASSY AND RELAY VALVE	8	RESERVOIR - VOLUME TO BE AS PER FMVSS 121
3	SEALCO NO. 110570 CONTROL LINE VALVE	9	SPRING BRAKE & SERVICE BRAKE CHAMBER
4	SEALCO NO. 10200-1/2 ONE-WAY CHECK VALVE	10	616 1/2" X 3/4" NIPPLE OR 6002 1/2" X 1/2" NIPPLE
5	MERITOR WABCO NO. 432 500 005 0 CONTROL LINE FILTER	11	616 1/2" X 3/4" NIPPLE OR 6006 3/4" X 3/4" NIPPLE
6	SEALCO NO. 2550 LINE FILTER		



**SPRING BRAKE CONTROL VALVE**

SEALCO NO. 110500  
 1. CONTROL PORT (1) - 3/8 N.P.T.  
 2. SUPPLY PORT (1) - 3/8 N.P.T.  
 3. RESERVOIR PORT (1) - 1/2 N.P.T.  
 4. DELIVERY PORT (4) - 3/8 N.P.T.

**2S/1M ECU ASSY & RELAY VALVE**

WABCO NO. 400 500 104 0  
 1. SUPPLY/RES PORT (2) - 3/4 N.P.T.  
 2. DELIVERY PORT (4) - 3/8 N.P.T.  
 4. CONTROL PORT (1) - 3/8 N.P.T.

**CONTROL LINE VALVE**

SEALCO NO. 110570  
 1. CONTROL PORT (1) - 3/8 N.P.T.  
 2. RESERVOIR PORT (1) - 1/2 N.P.T.  
 3. DELIVERY PORT (1) - 3/8 N.P.T.  
 4. DOLLY PORT (1) - 3/8 N.P.T.

**ANTI BACK CHARGE VALVE**

SEALCO NO. 110474  
 1. SUPPLY PORT IN (1) - 3/8 N.P.T.  
 2. SUPPLY PORT OUT (1) - 3/8 N.P.T.  
 3. EXHAUST PORT (1) - 3/8 N.P.T.

VEHICLE COMPLIANCE & CERTIFICATION WITH ALL APPLICABLE FEDERAL, STATE & PROVINCIAL REGULATIONS INCLUDING FMVSS 121 & CMVSS 121 IS SOLELY THE RESPONSIBILITY OF THE VEHICLE MANUFACTURER

AIR SYSTEM REQUESTED BY:

TANDEM AXLE DOLLY 2S/1M

DRAWN BY: MG	CHECKED: ZY	DATE: 4-1-2021	DRAWING NO: P-7933
-----------------	----------------	-------------------	-----------------------