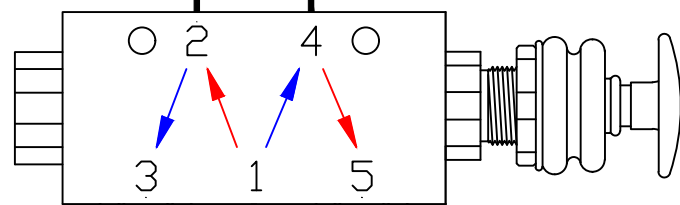
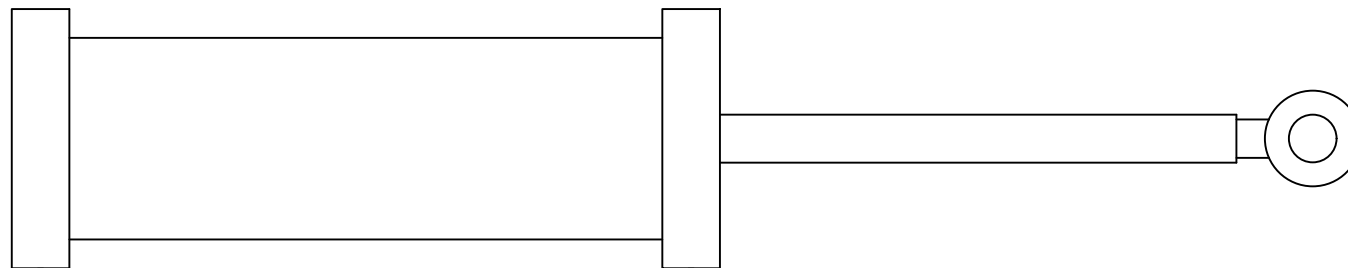


AIR FLOW WITH KNOB PULLED OUT
CYLINDER ROD WILL BE EXTENDED

AIR FLOW WITH KNOB PUSHED IN
CYLINDER ROD WILL BE RETRACTED

AIR CYLINDER



EXHAUST
*

EXHAUST
*

IN FROM TANK

SEALCO 521160
MANUALLY OPERATED
5-2 VALVE W/ BOOT
AND ADDITIONAL
110524 EXHAUST ASSEMBLY

* RECOMMENDED INSTALLATION
POSITION FOR EXHAUST PORT
IS FACING DOWNWARD

DR: MG	CH:	DATE: 2-12-2021	DRAWING NO: P-7921
-----------	-----	--------------------	-----------------------