

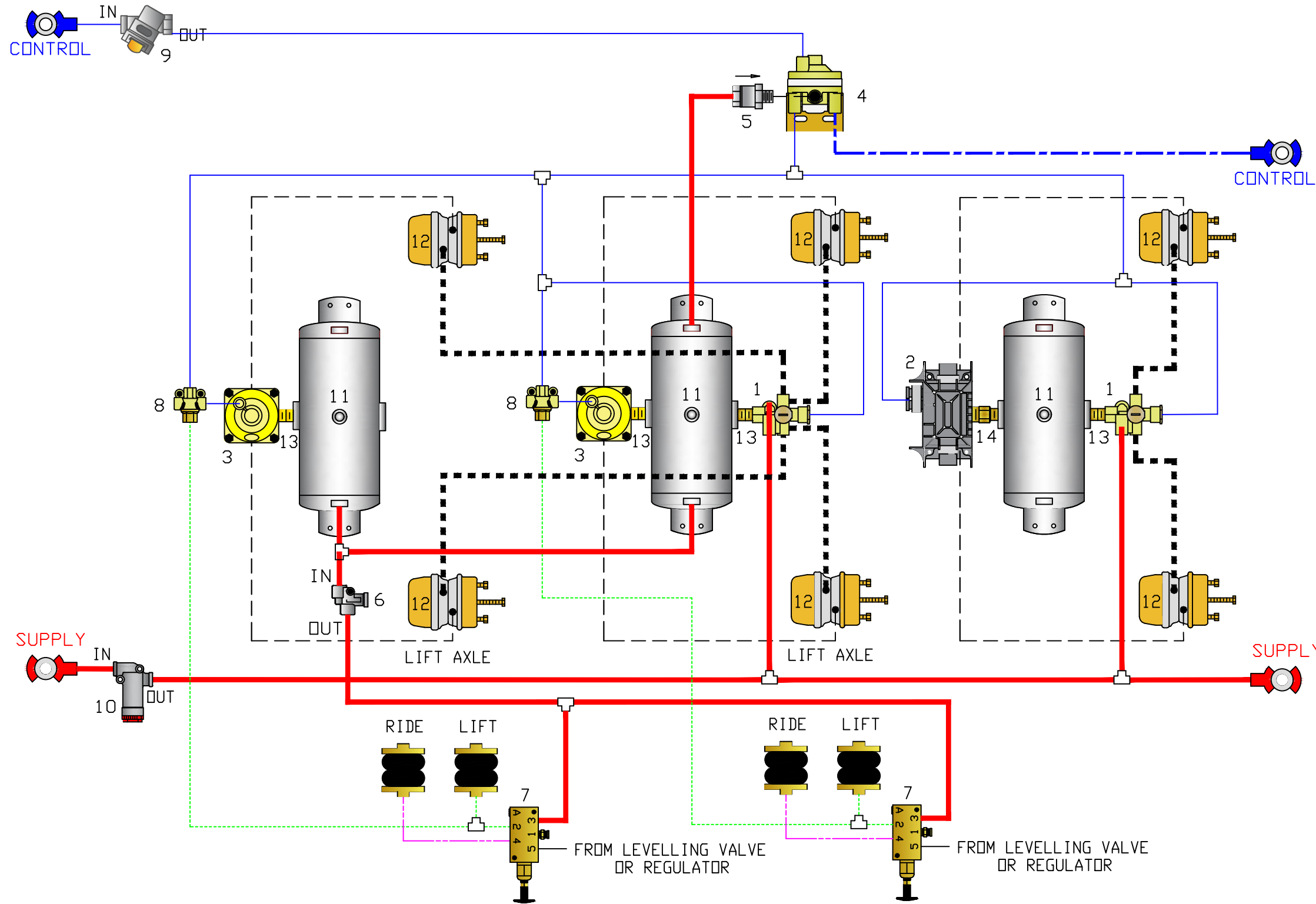


Sealco Commercial Vehicle Products

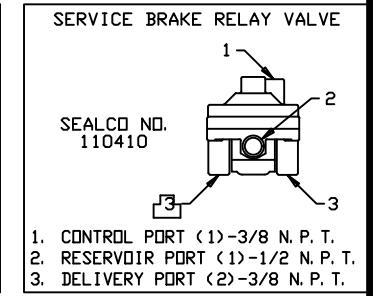
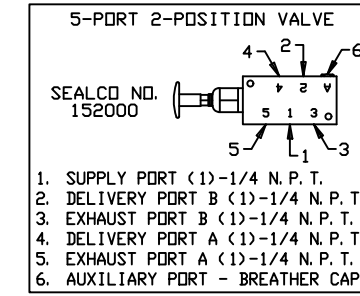
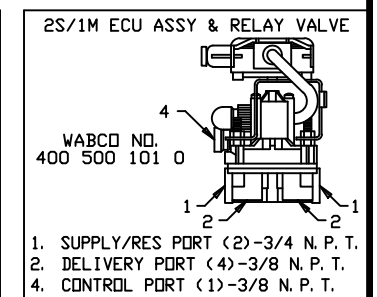
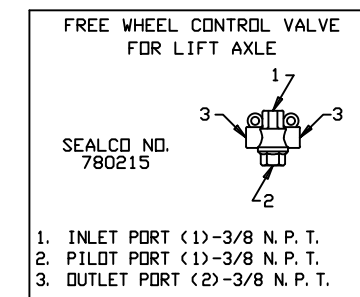
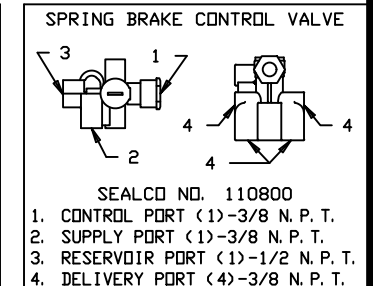
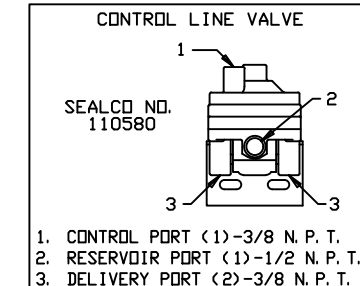
602-253-1007

fax 800/222-2334

www.sealcovp.com



NO.	DESCRIPTION
1.	SEALCO NO. 110800 SPRING BRAKE CONTROL VALVE
2.	WABCO NO. 400 500 101 0 ECU ASSEMBLY AND RELAY VALVE
3.	SEALCO NO. 110410 RELAY VALVE
4.	SEALCO NO. 110580 CONTROL LINE VALVE
5.	SEALCO NO. 10200-1/2 ONE WAY CHECK VALVE
6.	SEALCO NO. 140270 PRESSURE PROTECTION VALVE
7.	SEALCO NO. 152000 5 PORT - 2 WAY VALVE
8.	SEALCO NO. 780215 FREE WHEEL LIFT AXLE VALVE
9.	WABCO NO. 432 500 005 0 CONTROL LINE FILTER
10.	SEALCO NO. 2550 LINE FILTER
11.	RESERVOIR - VOLUME TO BE AS PER FMVSS-121
12.	SPRING BRAKE & SERVICE BRAKE CHAMBER
13.	SEALCO NO. 6002 1/2 X 1/2 OR 6003 1/2 X 3/4 NIPPLE
14.	SEALCO NO. 616 1/2 X 3/4 OR 6006 3/4 X 3/4 NIPPLE



- CONTROL LINE (BLUE-3/8")
- CONTROL LINE (BLUE-1/2")
- SUPPLY LINE (RED-1/2")
- - - SPRING BRAKE
- - - SERVICE BRAKE
- - - LIFT BAG
- - - RIDE BAG
- A/C ANTI COMPONDING
- PLUG ALL UNUSED PORTS

VEHICLE COMPLIANCE & CERTIFICATION WITH ALL APPLICABLE FEDERAL, STATE & PROVINCIAL REGULATIONS INCLUDING FMVSS 121 AND CMVSS 121 IS SOLELY THE RESPONSIBILITY OF THE VEHICLE MANUFACTURER

AIR SYSTEM DIAGRAM REQUESTED BY:  
--

3 AXLE B-TRAIN LEAD TRAILER WITH 2 LIFT AXLES			
DR: MG	CH: FF	DATE: 11-27-2019	JOB NO: P-7855