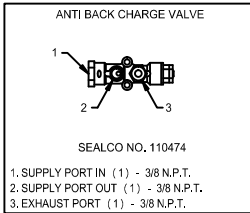
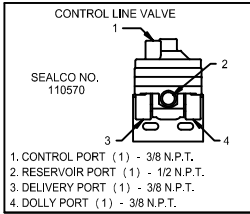
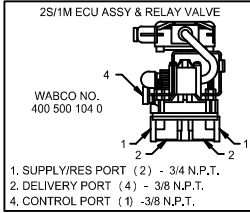
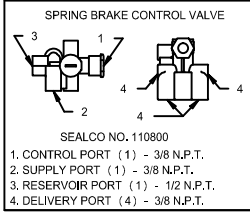
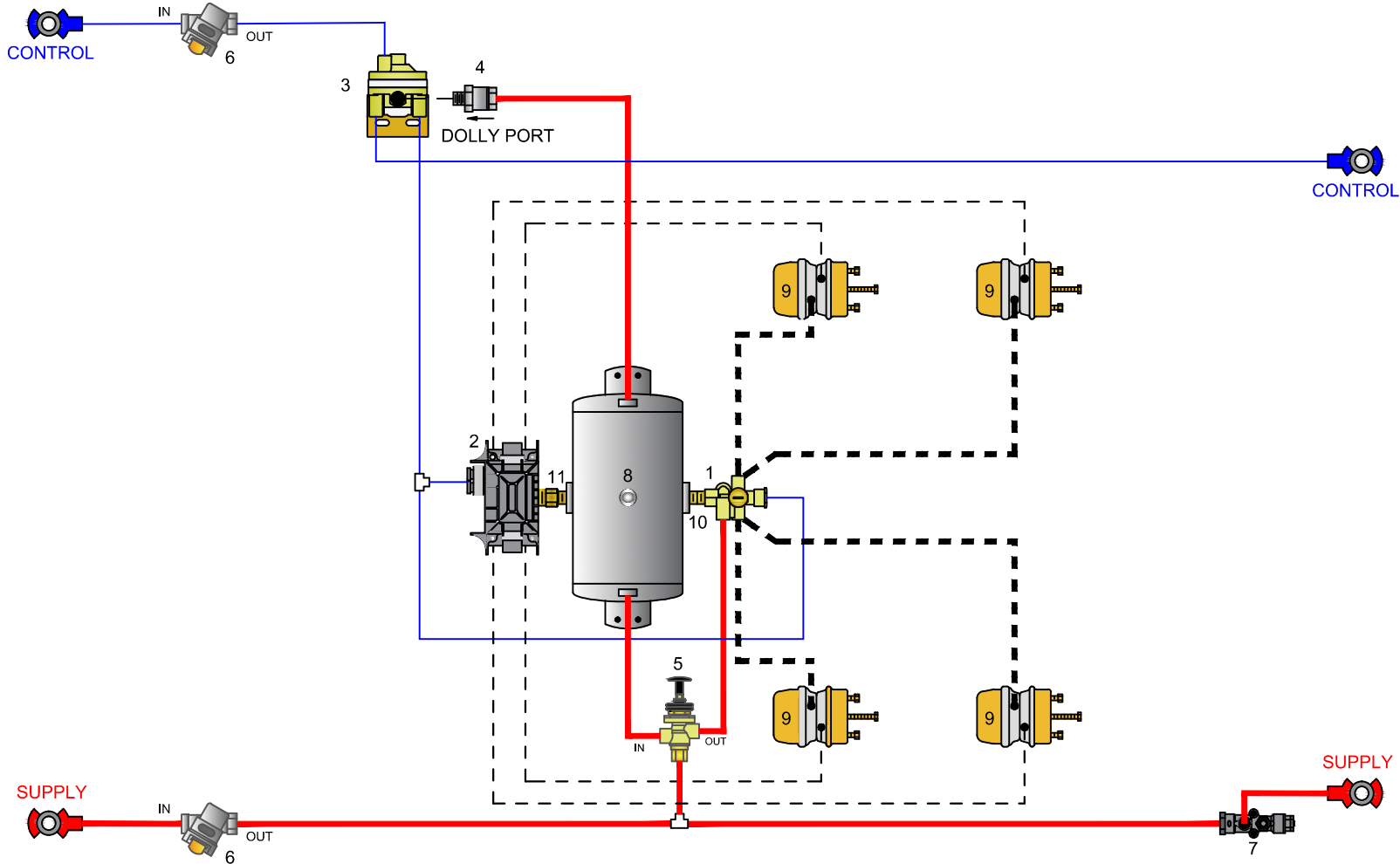
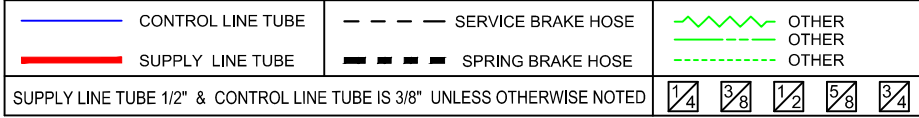


NO.	DESCRIPTION	NO.	DESCRIPTION
1	SEALCO NO. 110800 SPRING BRAKE CONTROL VALVE	7	SEALCO NO. 110474 ANTI BACK CHARGE VALVE
2	MERITOR WABCO NO. 400 500 104 0 ECU & RELAY VALVE ASSY	8	RESERVOIR - VOLUME TO BE AS PER FMVSS 121
3	SEALCO NO. 110570 CONTROL LINE VALVE	9	SPRING BRAKE & SERVICE BRAKE CHAMBER
4	SEALCO NO. 10200-1/2 ONE-WAY CHECK VALVE	10	616 1/2" X 3/4" NIPPLE OR 6002 1/2" X 1/2" NIPPLE
5	SEALCO NO. 17620 EMERGENCY RELEASE VALVE	11	616 1/2" X 3/4" NIPPLE OR 6006 3/4" X 3/4" NIPPLE
6	MERITOR WABCO NO. 432 500 005 0 CONTROL LINE FILTER		



VEHICLE COMPLIANCE & CERTIFICATION WITH ALL APPLICABLE FEDERAL, STATE & PROVINCIAL REGULATIONS INCLUDING FMVSS 121 & CMVSS 121 IS SOLELY THE RESPONSIBILITY OF THE VEHICLE MANUFACTURER

AIR SYSTEM REQUESTED BY:

TANDEM AXLE DOLLY 2S/1M

DRAWN BY: MG	CHECKED: ZY	DATE: 3-27-2018	DRAWING NO: P-7724
-----------------	----------------	--------------------	-----------------------