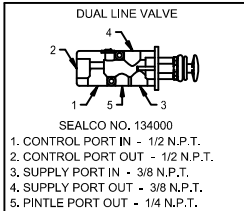
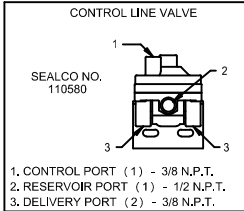
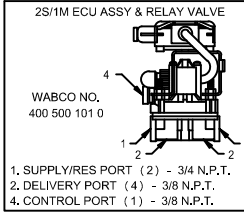
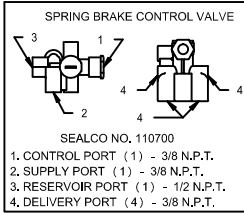
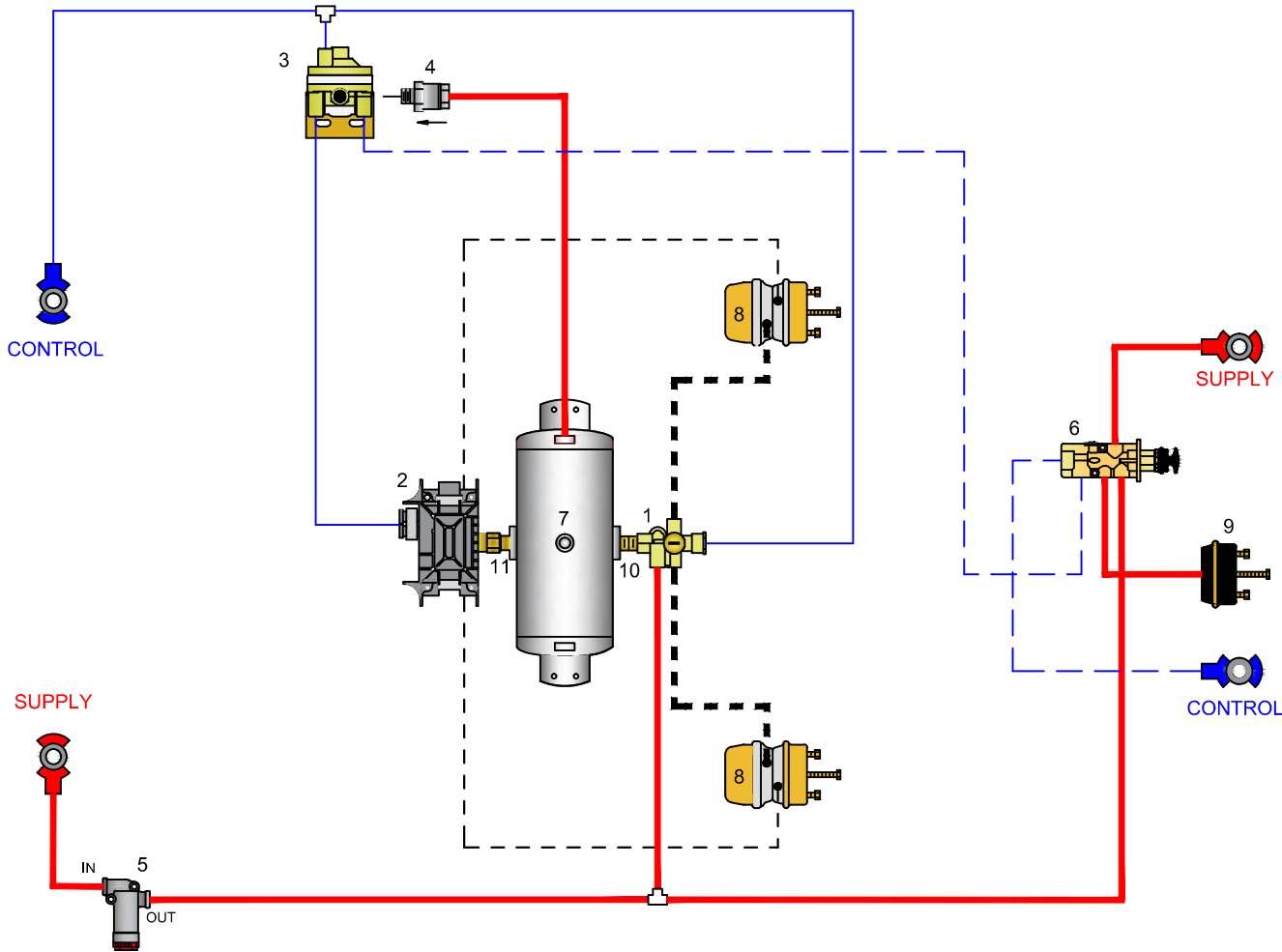


# SEALCO Sealco Commercial Vehicle Products

602-253-1007 fax 800/222-2334 www.sealcocvp.com

	CONTROL LINE TUBE 3/8"		SERVICE BRAKE HOSE		OTHER
	CONTROL LINE TUBE 1/2"		SPRING BRAKE HOSE		OTHER
	SUPPLY LINE TUBE 1/2"				

NO.	DESCRIPTION	NO.	DESCRIPTION
1	SEALCO NO. 110700 SPRING BRAKE CONTROL VALVE	7	RESERVOIR - VOLUME TO BE AS PER FMVSS 121
2	MERITOR WABCO NO.400 500 101 0 ECU ASSY & RELAY VALVE	8	SPRING BRAKE & SERVICE BRAKE CHAMBER
3	SEALCO NO. 110580 CONTROL LINE VALVE	9	PINTLE CHAMBER
4	SEALCO NO. 10200 1/2 ONE WAY CHECK VALVE	10	616 1/2" X 3/4" NIPPLE OR 6002 1/2" X 1/2" NIPPLE
5	SEALCO NO. 2550 LINE FILTER	11	616 1/2" X 3/4" NIPPLE OR 6006 3/4" X 3/4" NIPPLE
6	SEALCO NO. 134000 DUAL LINE VALVE	12	



VEHICLE COMPLIANCE & CERTIFICATION WITH ALL APPLICABLE FEDERAL, STATE & PROVINCIAL REGULATIONS INCLUDING FMVSS 121 & CMVSS 121 IS SOLELY THE RESPONSIBILITY OF THE VEHICLE MANUFACTURER

AIR SYSTEM REQUESTED BY:

SINGLE AXLE - DOUBLE

DRAWN BY:  
MG

CHECKED:  
-

DATE:  
1-24-2017

DRAWING NO:  
P-7632