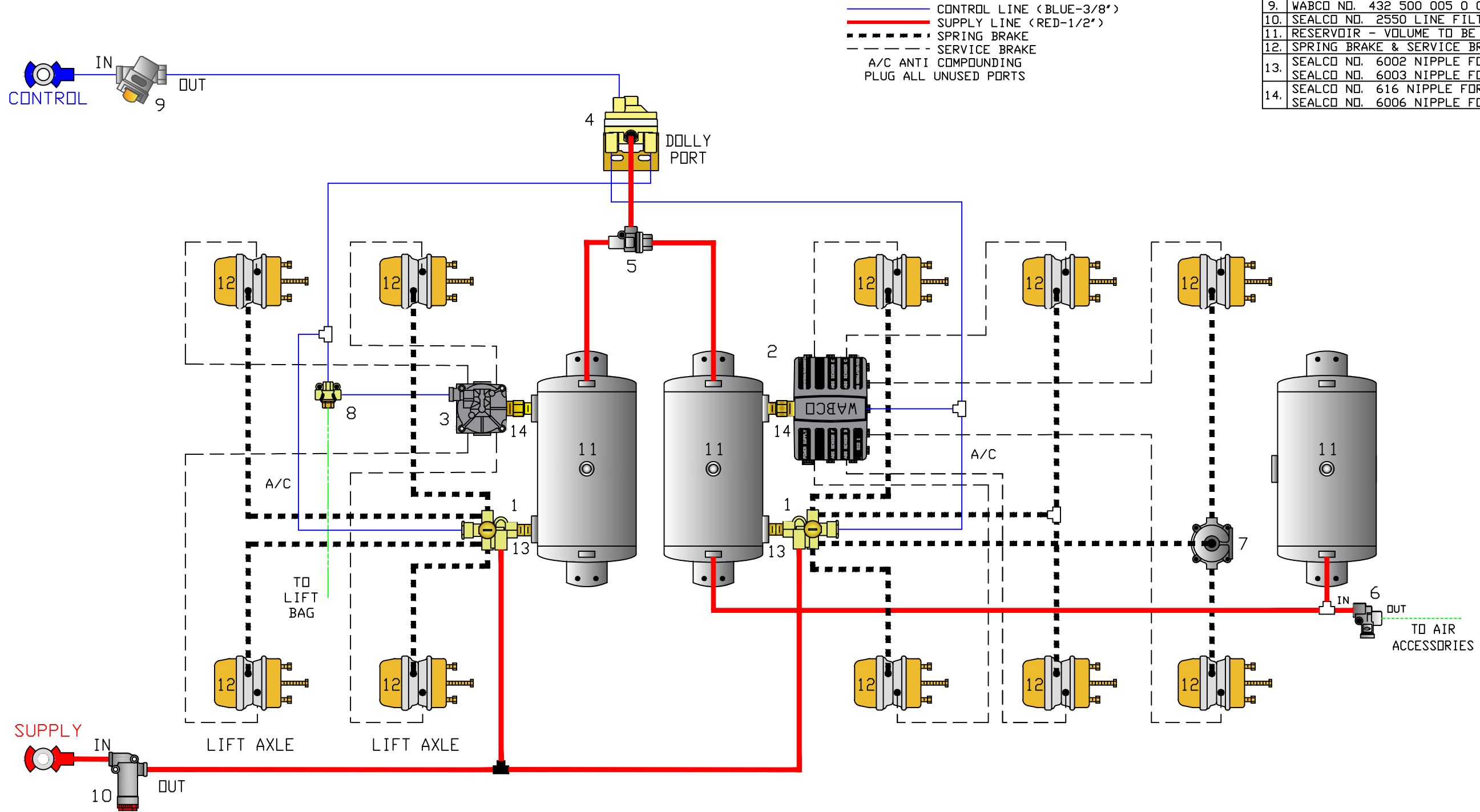




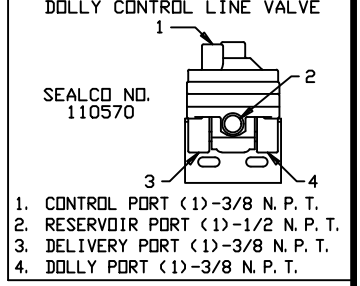
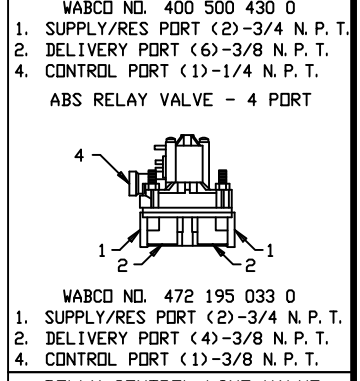
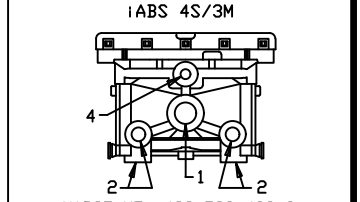
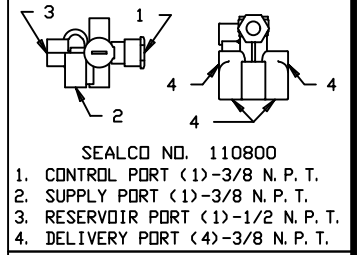
Sealco Commercial Vehicle Products

602-253-1007 fax 800/222-2334 www.sealcovp.com

NO.	DESCRIPTION
1.	SEALCD NO. 110800 SPRING BRAKE CONTROL VALVE
2.	WABCO NO. 400 500 430 0 iABS
3.	WABCO NO. 472 195 033 0 ABS RELAY VALVE
4.	SEALCD NO. 110570 DOLLY CONTROL LINE VALVE
5.	SEALCD NO. 320100 TWO-WAY CHECK VALVE
6.	SEALCD NO. 140270 PRESSURE PROTECTION VALVE
7.	SEALCD NO. 200001 QUICK RELEASE VALVE
8.	SEALCD NO. 780215 FREE WHEEL DUAL DELIVERY
9.	WABCO NO. 432 500 005 0 CONTROL LINE VALVE
10.	SEALCD NO. 2550 LINE FILTER
11.	RESERVOIR - VOLUME TO BE AS PER FMVSS-121
12.	SPRING BRAKE & SERVICE BRAKE CHAMBER
13.	SEALCD NO. 6002 NIPPLE FOR 1/2 N. P. T. TANK PORT
14.	SEALCD NO. 6003 NIPPLE FOR 3/4 N. P. T. TANK PORT
14.	SEALCD NO. 616 NIPPLE FOR 1/2 N. P. T. TANK PORT
14.	SEALCD NO. 6006 NIPPLE FOR 3/4 N. P. T. TANK PORT



SPRING BRAKE CONTROL VALVE



VEHICLE COMPLIANCE & CERTIFICATION WITH ALL APPLICABLE FEDERAL, STATE & PROVINCIAL REGULATIONS INCLUDING FMVSS 121 AND CMVSS 121 IS SOLELY THE RESPONSIBILITY OF THE VEHICLE MANUFACTURER

AIR SYSTEM DIAGRAM REQUESTED BY: --

5 AXLE SEMI WITH iABS			
DR: MG	CH: ZY	DATE: 9-12-2022	JOB NO: P-8047