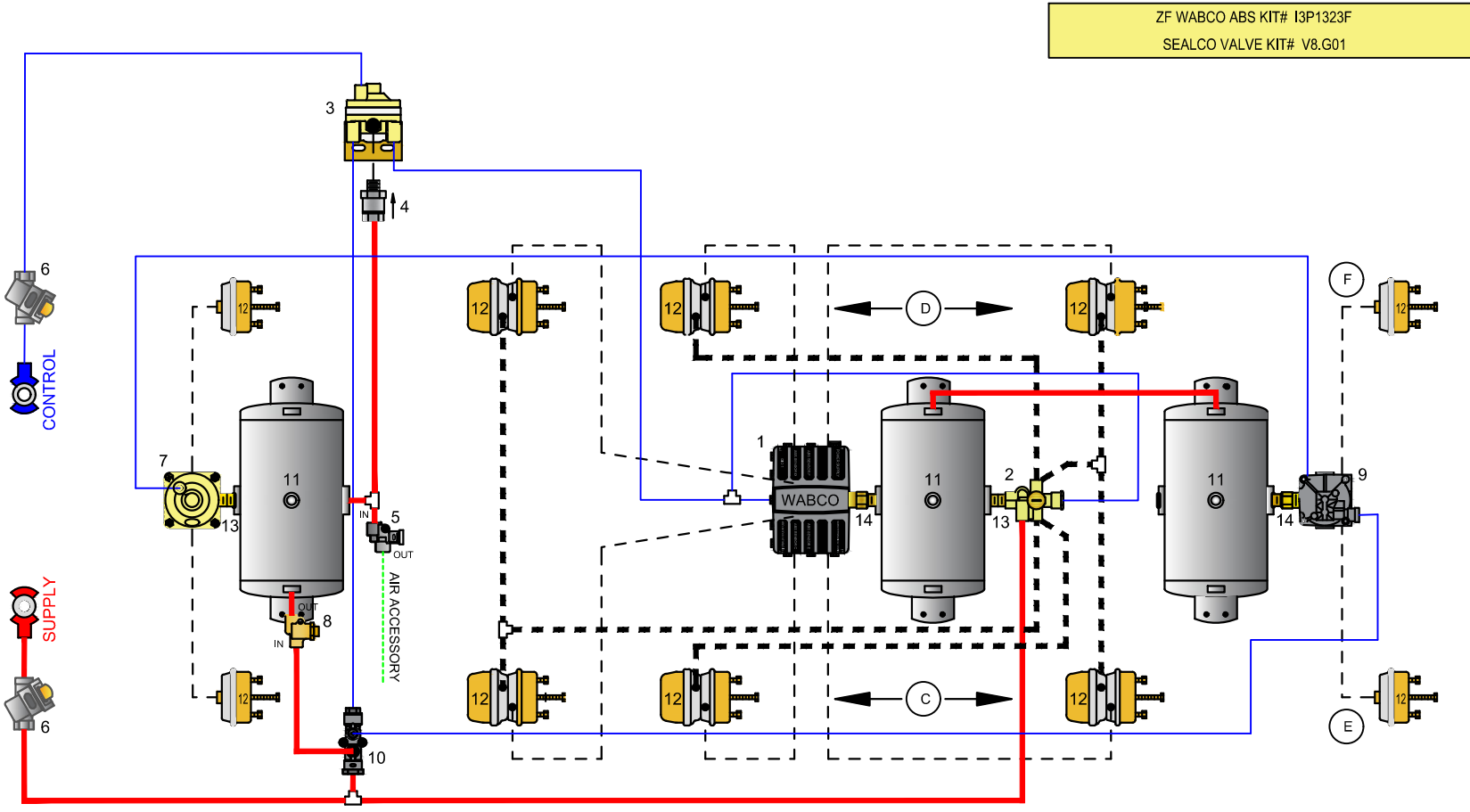


CONTROL LINE TUBE	SERVICE BRAKE HOSE	OTHER
SUPPLY LINE TUBE	SPRING BRAKE HOSE	OTHER
SUPPLY LINE TUBE 1/2" & CONTROL LINE TUBE IS 3/8" UNLESS OTHERWISE NOTED		

NO.	DESCRIPTION	NO.	DESCRIPTION
1	ZF WABCO NO. 400 500 430 0 iABS	8	SEALCO NO. 110257 EMERGENCY BRAKE PRESSURE PROTECTION VALVE
2	SEALCO NO. 110800 SPRING BRAKE CONTROL VALVE	9	ZF WABCO NO. 472 195 033 0 ABS SERVICE RELAY VALVE
3	SEALCO NO. 110588 CONTROL LINE BOOSTER VALVE	10	SEALCO NO. 110376 EMERGENCY CONTROL VALVE
4	SEALCO NO. 10200 1/2 CHECK VALVE	11	RESERVOIR - VOLUME TO BE AS PER FMVSS 121
5	SEALCO NO. 140270 PRESSURE PROTECTION VALVE	12	SPRING BRAKE & SERVICE BRAKE CHAMBER
6	ZF WABCO NO. 432 500 005 0 CONTROL LINE FILTER	13	616 1/2" X 3/4" NIPPLE OR 6002 1/2" X 1/2" NIPPLE
7	SEALCO NO. 110360 SERVICE RELAY VALVE	14	616 1/2" X 3/4" NIPPLE OR 6006 3/4" X 3/4" NIPPLE



**iABS**

ZF WABCO NO. 400 500 430 0  
 1. SUPPLY RES PORT (2) -3/4 N.P.T.  
 2. DELIVERY PORT (6) -3/8 N.P.T.  
 4. CONTROL PORT (1) -3/8 N.P.T.

**ABS RELAY VALVE - 4 PORT**

ZF WABCO NO. 472 195 033 0  
 1. SUPPLY RES PORT (2) -3/4 N.P.T.  
 2. DELIVERY PORT (4) -3/8 N.P.T.  
 4. CONTROL PORT (1) -3/8 N.P.T.

**SPRING BRAKE CONTROL VALVE**

SEALCO NO. 110800  
 1. CONTROL PORT (1) -3/8 N.P.T.  
 2. SUPPLY PORT (1) -3/8 N.P.T.  
 3. RESERVOIR PORT (1) -1/2 N.P.T.  
 4. DELIVERY PORT (4) -3/8 N.P.T.

**CONTROL LINE VALVE**

SEALCO NO. 110588  
 1. CONTROL PORT (1) -3/8 N.P.T.  
 2. RESERVOIR PORT (1) -1/2 N.P.T.  
 3. DELIVERY PORT (1) -3/8 N.P.T.

**SERVICE BRAKE RELAY VALVE**

SEALCO NO. 110360  
 1. CONTROL PORT (1) -3/8 N.P.T.  
 2. RESERVOIR PORT (1) -1/2 N.P.T.  
 3. DELIVERY PORT (2) -3/8 N.P.T.

VEHICLE COMPLIANCE & CERTIFICATION WITH ALL APPLICABLE FEDERAL, STATE & PROVINCIAL REGULATIONS INCLUDING FMVSS 121 & CMVSS 121 IS SOLELY THE RESPONSIBILITY OF THE VEHICLE MANUFACTURER

AIR SYSTEM REQUESTED BY:

<b>FIVE AXLE 4S3M SEMI TRAILER</b>			
DRAWN BY: <b>JD</b>	CHECKED: <b>ZY</b>	DATE: <b>10-13-2022</b>	DRAWING NO.: <b>P-8027</b>