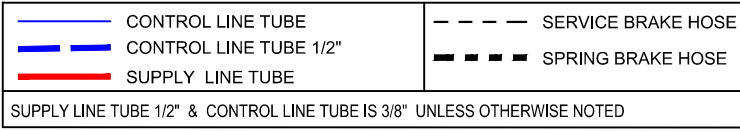


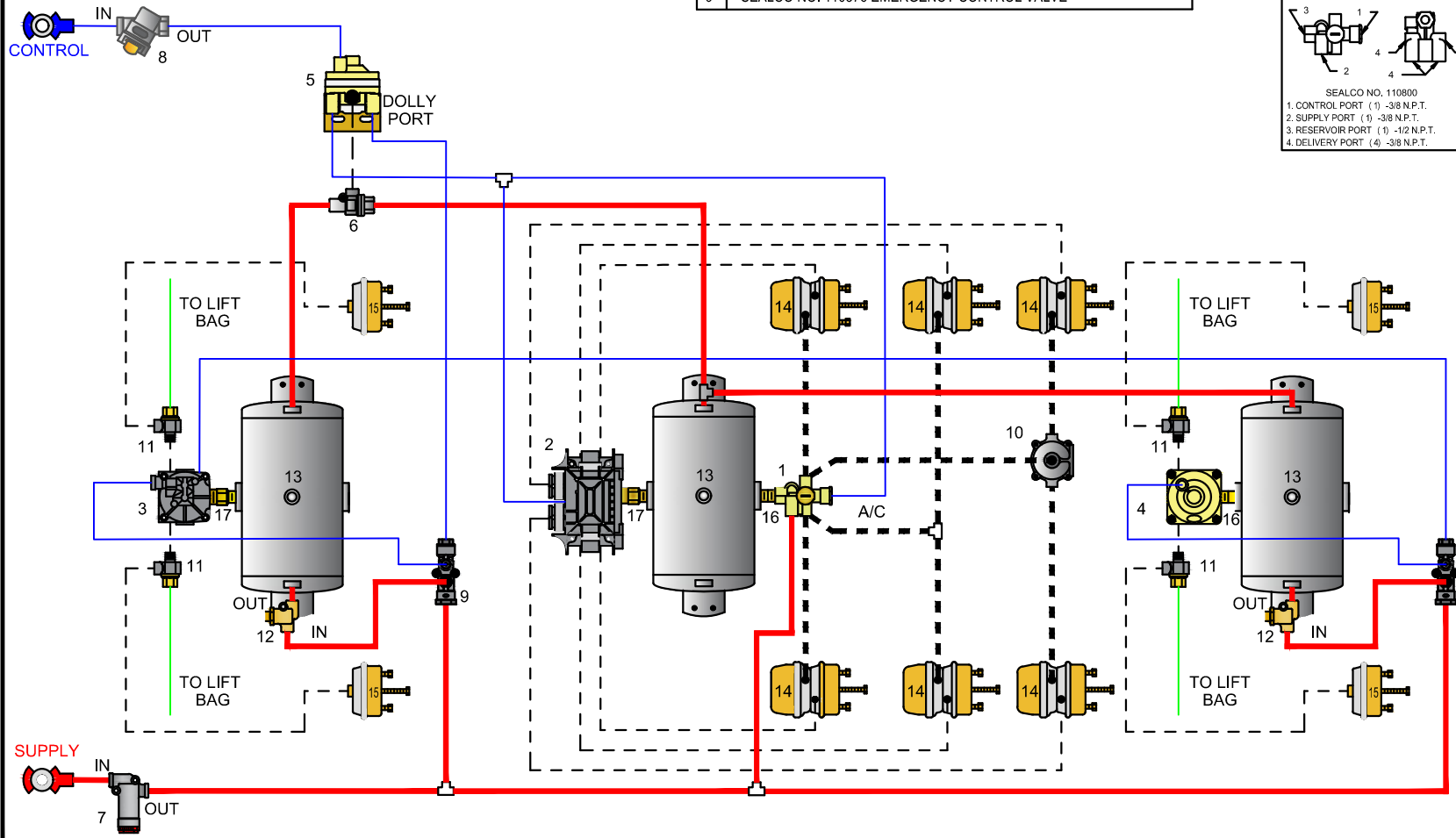


Sealco Commercial Vehicle Products

602-253-1007 fax 800/222-2334 www.sealcovp.com



NO	DESCRIPTION	NO	DESCRIPTION
1	SEALCO NO. 110800 SPRING BRAKE CONTROL VALVE	10	SEALCO NO. 200001 QUICK RELEASE VALVE
2	MERITOR WABCO NO. 400 500 103 0 ECU VALVE ASSEMBLY	11	SEALCO NO. 780115 FREE WHEEL CONTROL VALVE
3	MERITOR WABCO NO. 472 195 033 0 ABS RELAY VALVE	12	SEALCO NO. 110257 PRESSURE PROTECTION VALVE
4	SEALCO NO. 110360 RELAY VALVE	13	RESERVOIR - VOLUME TO BE AS PER FMVSS 121
5	SEALCO NO. 110570 CONTROL LINE VALVE	14	SPRING BRAKE & SERVICE BRAKE CHAMBER
6	SEALCO NO. 320100 TWO WAY CHECK VALVE	15	SERVICE BRAKE CHAMBER
7	SEALCO NO. 2550 LINE FILTER	16	616 1/2" X 3/4" NIPPLE OR 6002 1/2" X 1/2" NIPPLE
8	MERITOR WABCO NO.432 500 005 0 CONTROL LINE FILTER	17	616 1/2" X 3/4" NIPPLE OR 6006 3/4" X 3/4" NIPPLE
9	SEALCO NO. 110376 EMERGENCY CONTROL VALVE		



SPRING BRAKE CONTROL VALVE

SEALCO NO. 110800
 1. CONTROL PORT (1) -3/8 N.P.T.
 2. SUPPLY PORT (1) -3/8 N.P.T.
 3. RESERVOIR PORT (1) -1/2 N.P.T.
 4. DELIVERY PORT (4) -3/8 N.P.T.

PREMIUM ECU & DOUBLE MODULATOR ASSEMBLY AS 4S/3M

MERITOR WABCO NO. 400 500 103 0
 1. SUPPLY RES PORT (2) -3/4 N.P.T.
 2. DELIVERY PORT (8) -3/8 N.P.T.
 4. CONTROL PORT (1) -1/4 N.P.T.

ABS RELAY VALVE - 4 PORT

MERITOR WABCO NO. 472 195 033 0
 1. SUPPLY RES PORT (2) -3/4 N.P.T.
 2. DELIVERY PORT (4) -3/8 N.P.T.
 4. CONTROL PORT (1) -3/8 N.P.T.

SERVICE BRAKE RELAY VALVE

SEALCO NO. 110360
 1. CONTROL PORT (1) -3/8 N.P.T.
 2. RESERVOIR PORT (1) -1/2 N.P.T.
 3. DELIVERY PORT (2) -3/8 N.P.T.

DOLLY CONTROL LINE VALVE

SEALCO NO. 110570
 1. CONTROL PORT (1) -3/8 N.P.T.
 2. RESERVOIR PORT (1) -1/2 N.P.T.
 3. DELIVERY PORT (1) -3/8 N.P.T.
 4. DOLLY PORT (1) -3/8 N.P.T.

EMERGENCY CONTROL VALVE

SEALCO NO. 110376
 1. CONTROL PORT (1) -3/8 N.P.T.
 2. SUPPLY PORT (1) -3/8 N.P.T.
 3. RESERVOIR PORT (1) -3/8 N.P.T.
 4. DELIVERY PORT (1) -3/8 N.P.T.

VEHICLE COMPLIANCE & CERTIFICATION WITH ALL APPLICABLE FEDERAL, STATE & PROVINCIAL REGULATIONS INCLUDING FMVSS 121 & CMVSS 121 IS SOLELY THE RESPONSIBILITY OF THE VEHICLE MANUFACTURER

AIR SYSTEM REQUESTED BY:

SPIF 4S/3M ABS 5 AXLE (1+3+1) SEMI TRAILER

DRAWN BY: JD	CHECKED: -	DATE: 6/6/2022	DRAWING NO: P-8014
-----------------	---------------	-------------------	-----------------------