

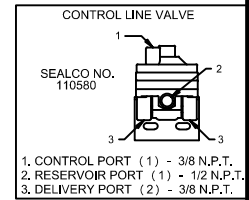
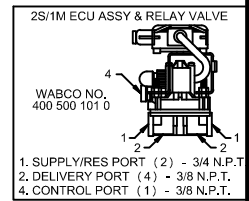
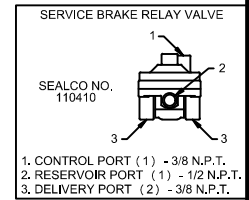
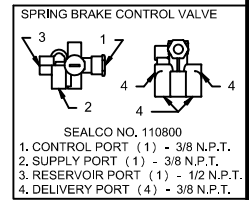
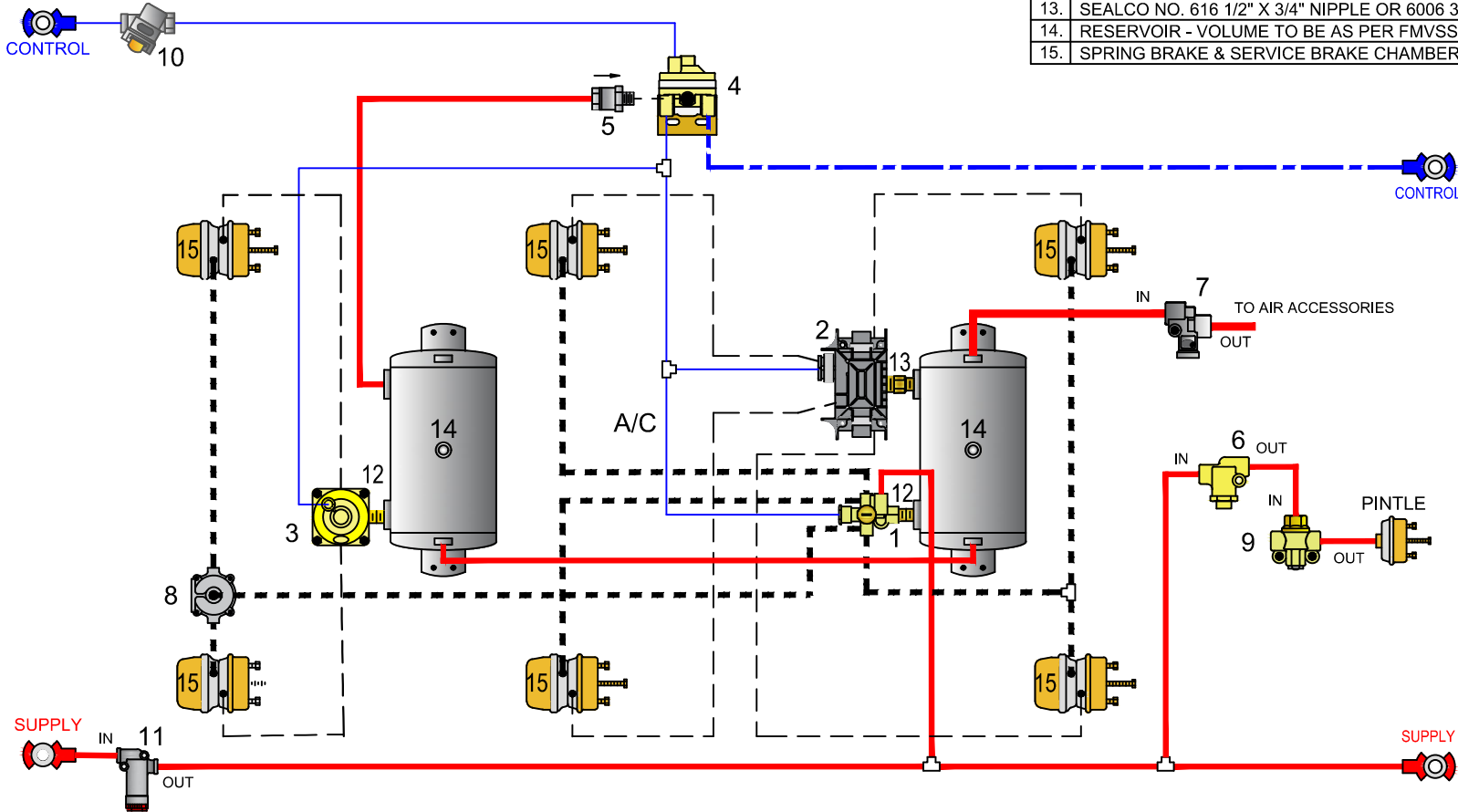


Sealco Commercial Vehicle Products

602-253-1007 fax 800/222-2334 www.sealcocvp.com

- CONTROL LINE (BLUE-3/8")
- - - CONTROL LINE (BLUE-1/2")
- SUPPLY LINE (RED-1/2")
- - - - - SPRING BRAKE
- - - - - SERVICE BRAKE
- A/C ANTI COMPOUNDING
- PLUG ALL UNUSED PORTS

NO.	DESCRIPTION
1.	SEALCO NO. 110800 SPRING BRAKE CONTROL VALVE
2.	MERITOR WABCO NO. 400 500 101 0 ECU ASSEMBLY & RELAY VALVE
3.	SEALCO NO. 110410 RELAY VALVE
4.	SEALCO NO. 110580 CONTROL LINE VALVE
5.	SEALCO NO. 10200-1/2 ONE WAY CHECK VALVE
6.	SEALCO NO. 110257 EMERGENCY BRAKE PRESSURE PROTECTION
7.	SEALCO NO. 140270 PRESSURE PROTECTION VALVE
8.	SEALCO NO. 200001 QUICK RELEASE VALVE
9.	SEALCO NO. 780524 RATIO EXHAUST VALVE WITH SEAL
10.	MERITOR WABCO NO. 432 500 005 0 CONTROL LINE FILTER
11.	SEALCO NO. 2550 LINE FILTER
12.	SEALCO NO. 616 1/2" X 3/4" NIPPLE OR 6002 1/2" X 3/4" NIPPLE
13.	SEALCO NO. 616 1/2" X 3/4" NIPPLE OR 6006 3/4" X 3/4" NIPPLE
14.	RESERVOIR - VOLUME TO BE AS PER FMVSS 121
15.	SPRING BRAKE & SERVICE BRAKE CHAMBER



VEHICLE COMPLIANCE & CERTIFICATION WITH ALL APPLICABLE FEDERAL, STATE & PROVINCIAL REGULATIONS INCLUDING FMVSS 121 & CMVSS 121 IS SOLELY THE RESPONSIBILITY OF THE VEHICLE MANUFACTURER

AIR SYSTEM REQUESTED BY:

THREE AXLE TRAILER DOUBLE

DRAWN BY: MG	CHECKED: ZY	DATE: 1-12-2021	DRAWING NO: P-7912
-----------------	----------------	--------------------	-----------------------